

GROUNDING

A review of the site in Skyway.

SITE OVERVIEW



SITE HIGHLIGHTS



LAKERIDGE PARK

TAYLOR CREEK HEADWATERS

S 112 ST

BUILDABLE AREA
WETLANDS SETBACK
WETLANDS

RENTON AVE S

S 116 ST

POTENTIAL FARM

ORCHARD
COMMUNITY
FARM

STREAM
GUEST
PARKING

S 118 ST

68TH AVE S

GROCERY
OUTLET

SKYWAY
PARK



SITE TOPOGRAPHY



OPPORTUNITY: How to make use of the slopes on the site and have the buildings and pathways (both for cars and people) work with the changes in elevation rather than against it.

We hiked up...



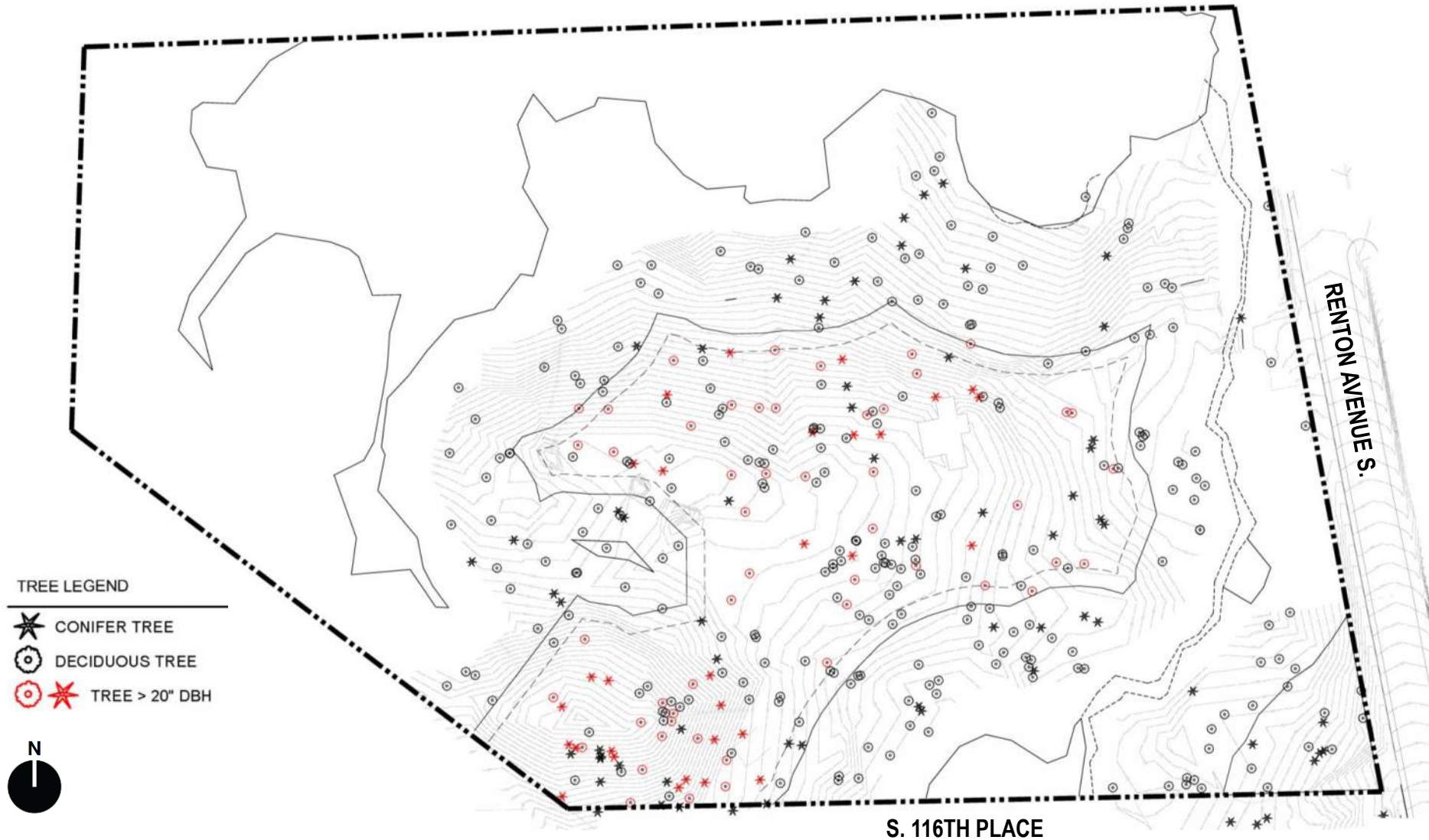
...we hiked down.





TREE CANOPY

OPPORTUNITY: Utilize existing trees where possible to help protect and define development.



WETLANDS



OPPORTUNITY: Make the wetlands feel like an asset to the development rather than a limitation on what we can do.

- Protect wildlife.
- Provide educational opportunities.



2002



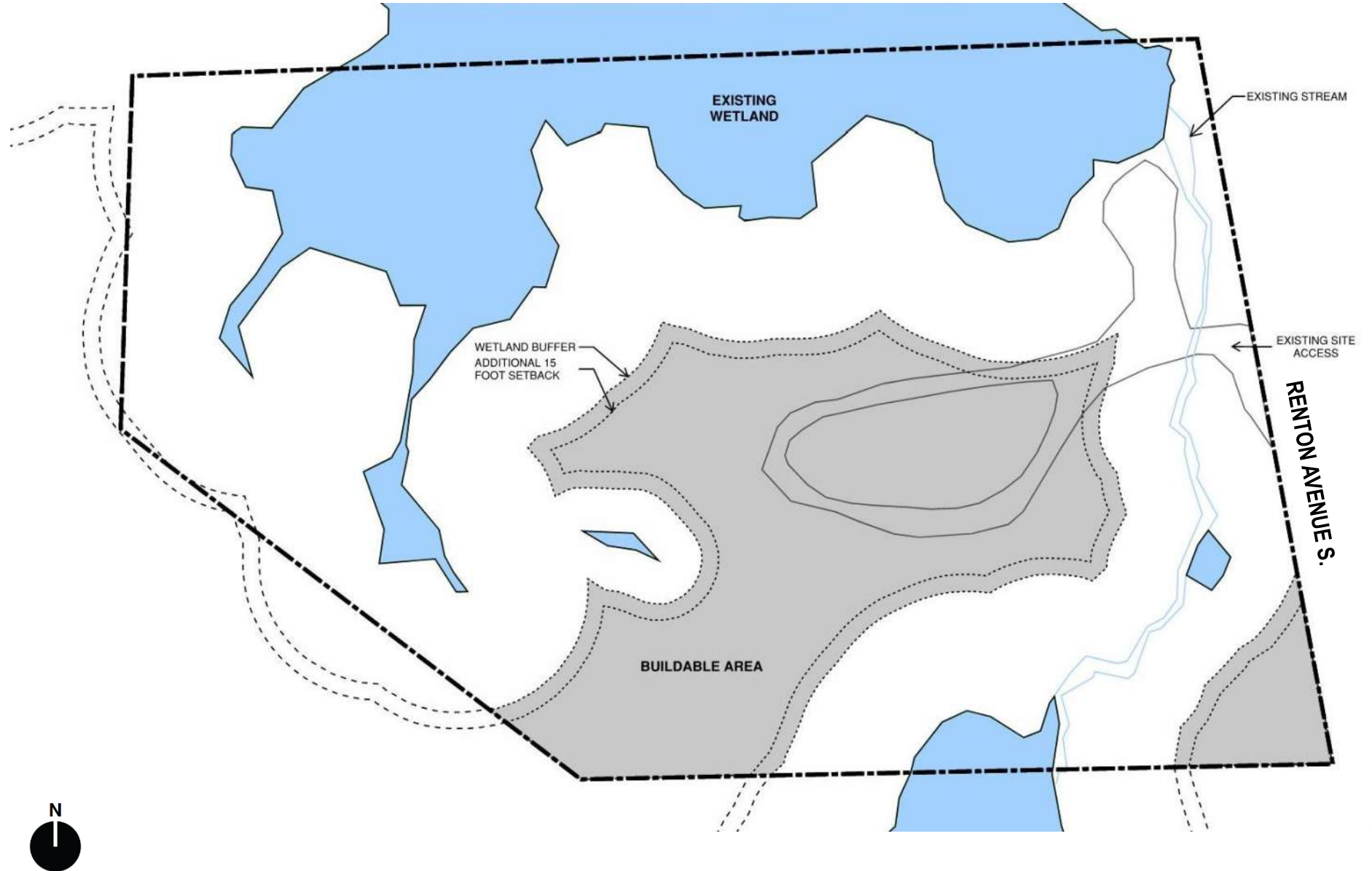
2009



2015



WETLANDS



CONNECTIONS



OPPORTUNITY: Utilized existing connections to the Skyway community.

- Maximize the connection to transit.
- Develop in conjunction with plans for neighborhood public space.
- Connect to nearby green space, trails, and community.



CONNECTIONS



LAKERIDGE PARK

← S 112 ST →

TO RAINIER
BEACH/SEATTLE

(106)

THE SILENT
TASK FORCE

RENTON AVE S

(106)

← S 115 ST →

TO LAKERIDGE
ELEMENTARY

← S 116 ST →

← S 118 ST →

(106)

GAS
STATION

(106)

SELF
STORAGE

TO SKYWAY/
RENTON

(107)

(107)

68TH AVE S

TO CAMPBELL
HILL ELEMENTARY
& I-5 ACCESS

GROCERY
OUTLET

GAS
STATION

SKYWAY
PARK

SKYWAY BOWL
(TEMP CLOSED)



QUESTIONS?

